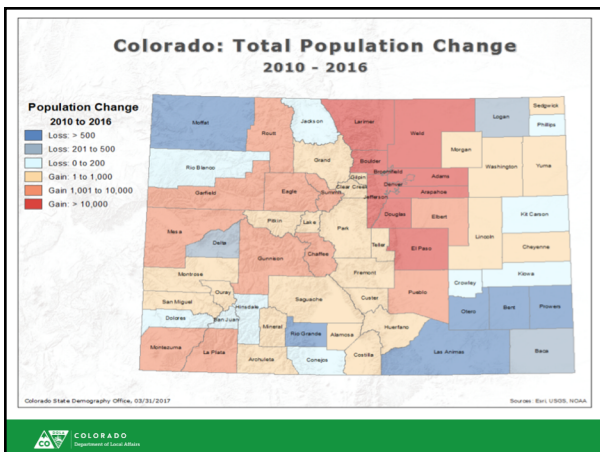




BIG PICTURE - 2016-17 POP CHANGE

- U.S. Population 2017: 325.7 Million +2.3 Million (0.7%)
- Colorado 2017 (Census): 5,607,154
- 9th fastest growth: 1.4% - ID, NV, UT, WA, FL
- 8th total growth: 77,049 - TX, FL, CA, WA, NC, GA, AZ
- Range in Colorado Counties in 2017
 - +12,000 to -470





2017 Population & Growth

Largest by Population

1	Denver County	704,600
2	El Paso County	699,200
3	Arapahoe County	643,000
4	Jefferson County	574,600
5	Adams County	503,200

Most Population Growth

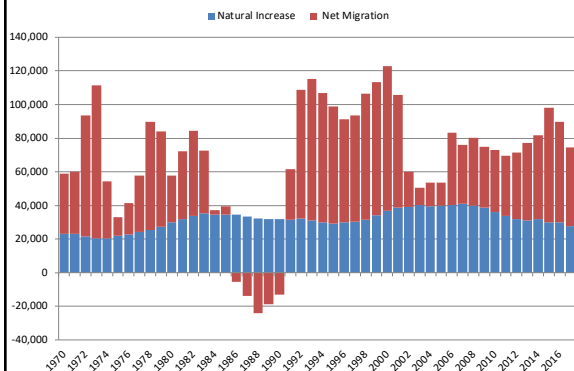
1	El Paso County	12,500
2	Weld County	10,400
3	Denver County	9,800
4	Douglas County	7,600
5	Arapahoe County	6,100

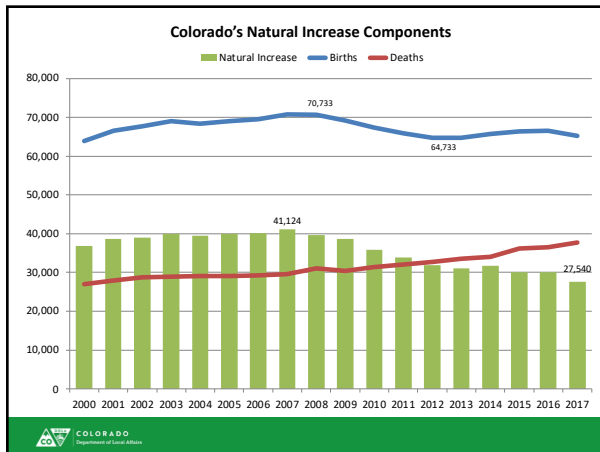


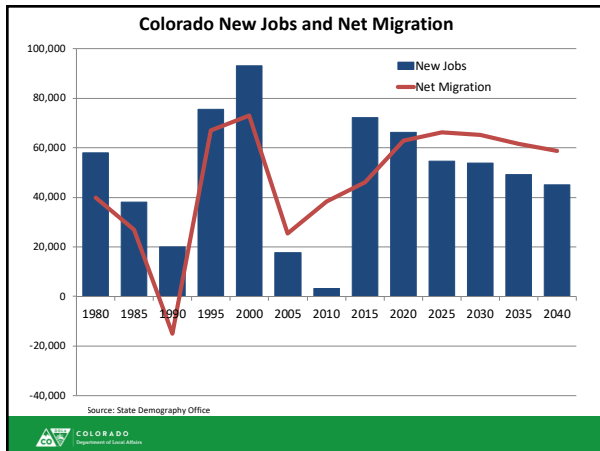
WHY ARE WE GROWING?

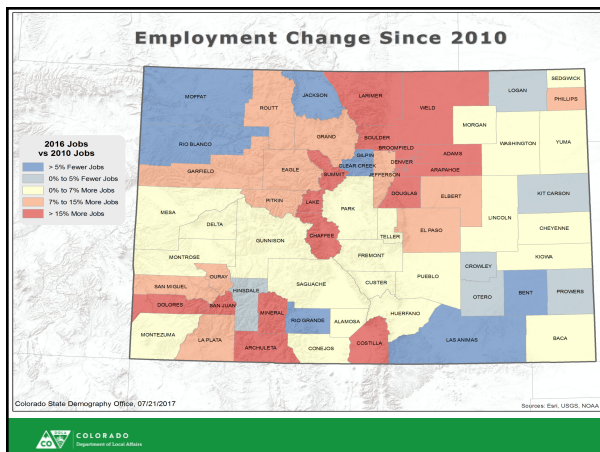


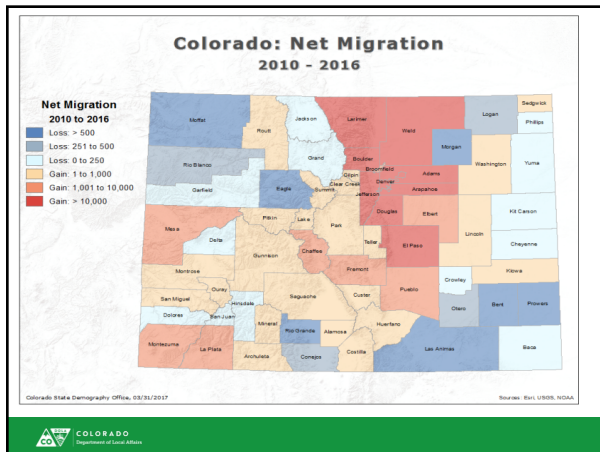
Components of Colorado Population Change 1970-2017







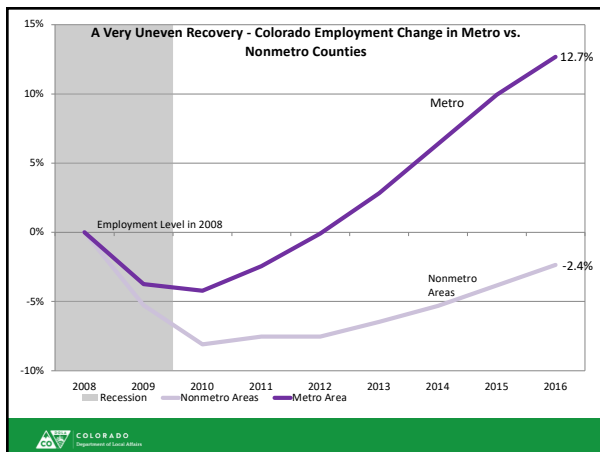


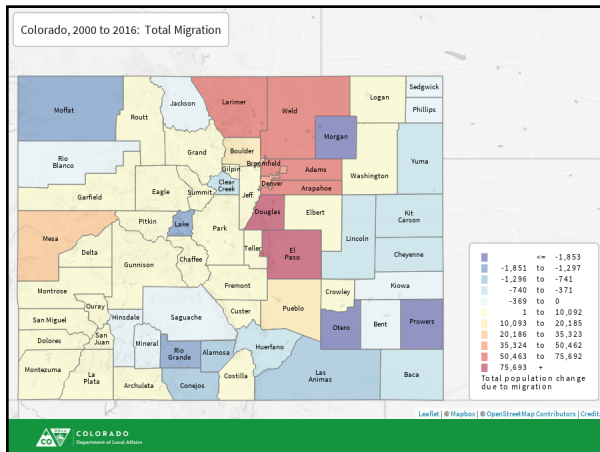


FASTEST GROWING STATES SINCE 2010 (JOBS)

State	Total Employment (6/17)	Absolute Job Growth from 6/10	Percentage Growth from 6/10
Utah	1,440,251	279,993	24%
Colorado	2,638,826	435,928	20%
Nevada	1,333,476	215,615	19%
Florida	8,390,550	1,357,439	19%
Oregon	1,912,562	285,850	18%
Idaho	723,511	107,024	17%
Texas	12,059,558	1,815,683	17%
Washington	3,352,497	492,709	17%
California	17,150,900	2,532,987	17%
Arizona	2,699,634	387,934	17%
Top 10	51,701,765	7,911,162	18.1%
United States	145,186,369	15,848,003	12.3%

Quarterly Census of Employment & Wages, BLS/LMI






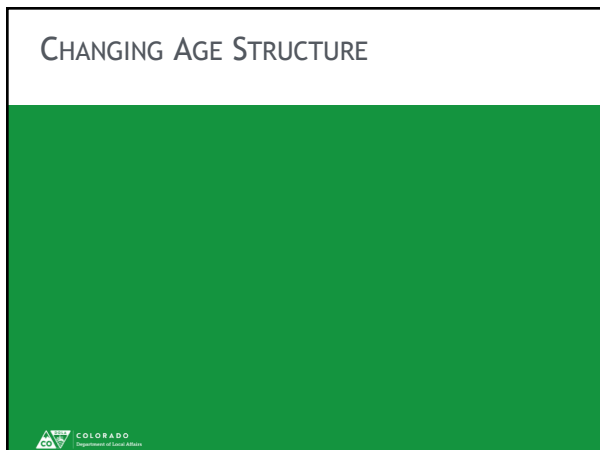
Colorado State to State Migration

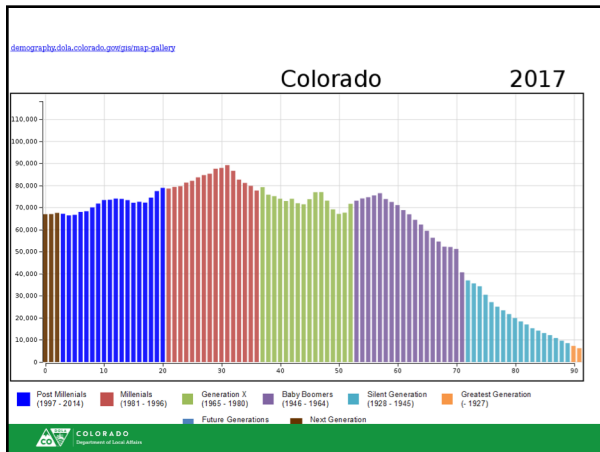
2016							
In		Out		Net	Gainers	Net	Losers
California	26,909	California	22,540	Illinois	8,112	Washington	-8,525
Texas	20,725	Texas	21,596	New York	5,149	Arkansas	-2,651
Florida	13,546	Washington	13,012	California	4,369	Nebraska	-2,507
Arizona	13,015	Arizona	11,895	Virginia	3,879	Idaho	-1,507
Illinois	11,369	Florida	9,880	Florida	3,666	Montana	-1,187

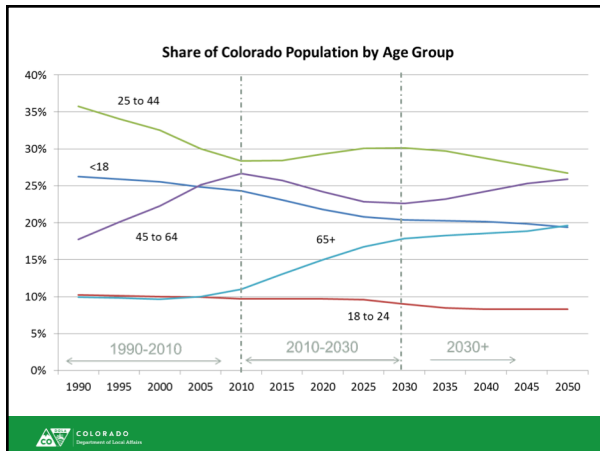
- In migration has been around 205,000-230,000 annually since 2010
- 42% of the population was born in state - 2016

 COLORADO
Department of Labor & Action

ACS 2016, Census Bureau

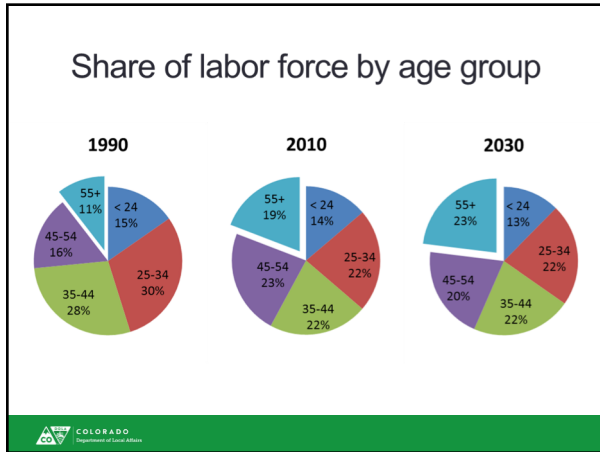


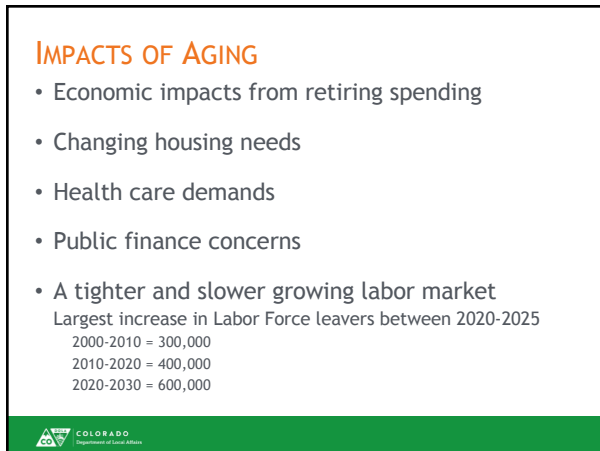


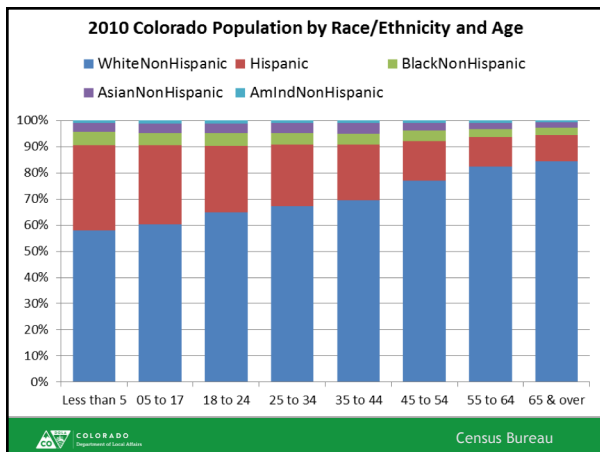


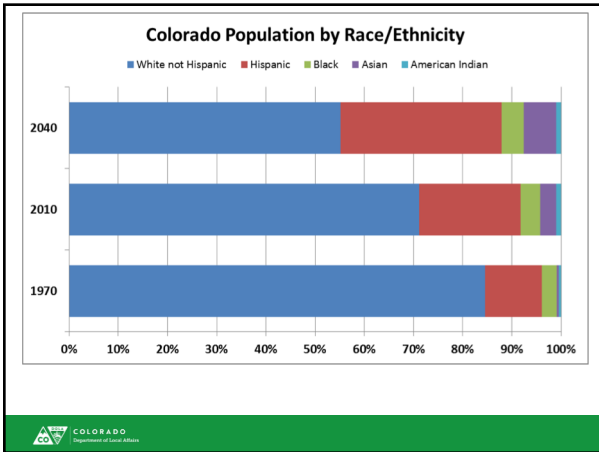
COLORADO'S RAPID AGING

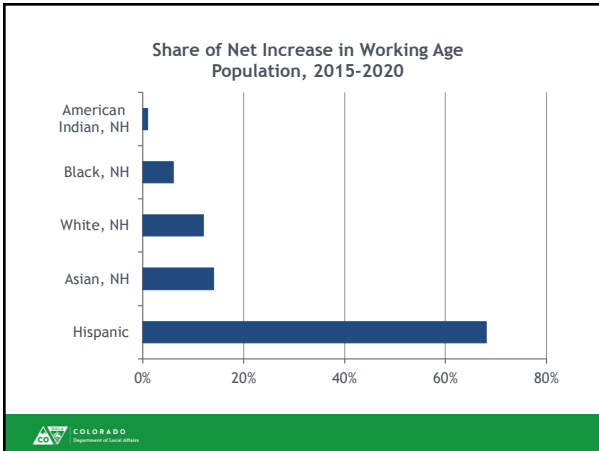
- Every County experienced growth in the population over age 65 from 2010-2016.
- Currently 6th youngest (share of population 65+, 13.4%)
- 3rd fastest growth in 65+ population in Nation from 2015-16.
- By 2030 we will look more like the Nation.
- Median age is forecast to increase from 36.7 to 40.7 by 2050.
- Statewide current residents aging 95% of growth 65+.











ECONOMY & LABOR MARKET

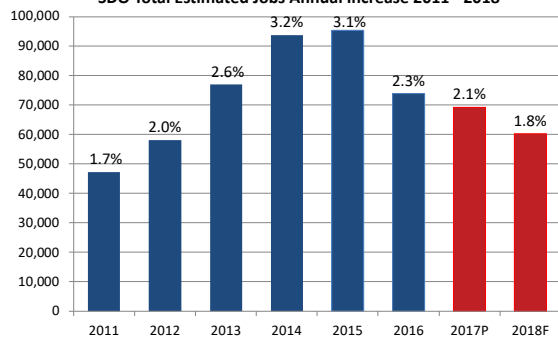
COLORADO Department of Labor Affairs

2017/18 UPDATE

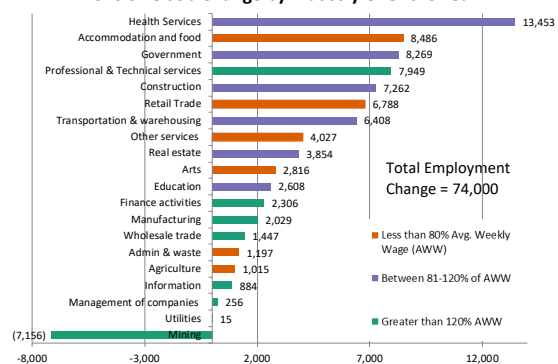
- Employment Growth Rate will Continue to Slow in 2018 Projected at **1.8%** Over the Year
- CO has one of the lowest Unemployment Rate's in U.S. And was been below 3.0% all year in 2017.
- Labor Force up 141,700 from December 2016 - over 3 million participants in Colorado

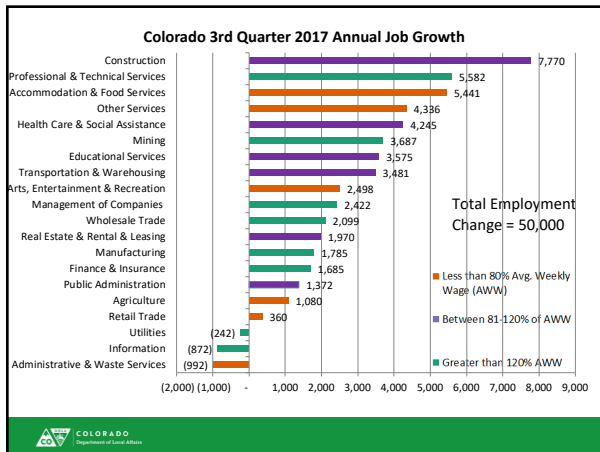


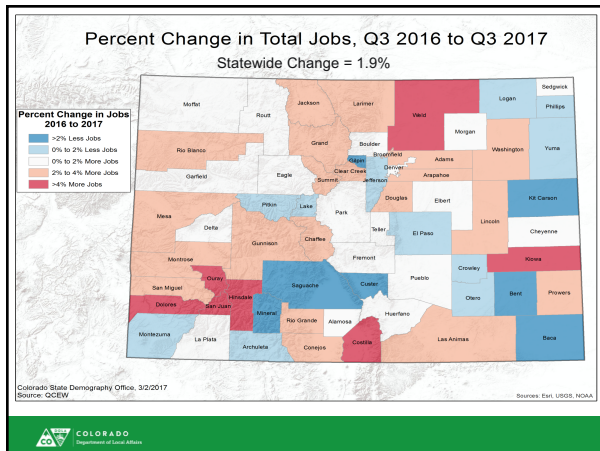
SDO Total Estimated Jobs Annual Increase 2011 - 2018



2016 SDO Job Change by Industry Over the Year







Summary Trends

Disparate growth - what is causing it and what can be done? Can linkages be created between Metro and Non-Metro.

Aging - we are getting old fast, is the state ready for the opportunities and changes to the labor force, income, industrial mix, housing, etc.

Colorado is becoming more racially and ethnically diverse, especially those currently under the age of 24.

Migration - how do we attract the best fit for the jobs and where do we house them? What if we can't attract?

Summary Trends - Continued

Continued job & population growth, but at a slower rate

Retail Trade employment likely to be flat / decline

Commuting & Child Care are challenges / barriers

Youth Unemployment trending down, Underemployment still a concern for youths and other at risk populations

There has never been a better time to find a job... But it will be much more difficult in a few years when we experience an economic downturn



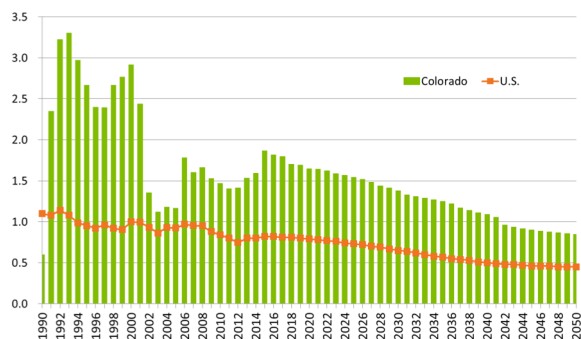
Everything is connected - population to jobs to education to housing to daycare to eldercare to infrastructure to transportation to population...

*Thank you
Questions?*

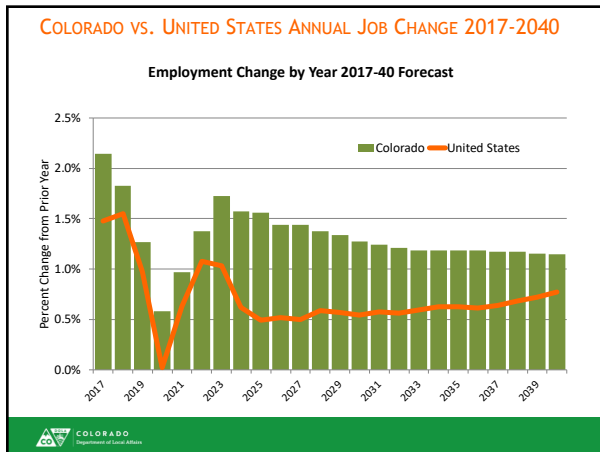
<https://demography.dola.colorado.gov/>
Cindy.degroot@state.co.us
303-864-7752

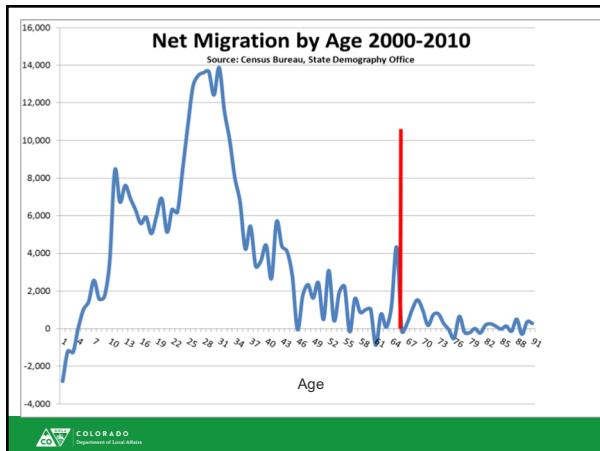


Colorado and U.S. Annual Pop Growth Rates



US forecast prepared by U.S. Bureau of the Census, 2014.





Factors influencing CO's Pop

- National Growth - National Policies - immigration
- Water
- Job Growth & Wage Growth (Skilled vs. Service)
- Housing - supply, price, type, location
- Infrastructure/Transportation
- State Budget/Policy - Property & Income Taxes
- Aging - age in place or move to lower cost locale?
- Industry changes - automation, consolidation, downturn, bust, recession, & competitiveness.
- Natural disasters - nationally

COLORADO
Department of Labor Affairs

QUICK FACTS ON COLORADO'S POPULATION

- 6th fastest growth Apr 2010 to July 2017 @ **11.5%** - DC, TX, ND, UT, and FL
- 8th most growth Apr 2010 to July 2017 @ **577,958** - TX, CA, FL, GA, WA, NC, AZ (61% of growth from migration)
- Median Age: **36.7** (12th lowest) - UT, AK, DC, TX, ID
- **13.4%** over age of 65 - AK, UT, DC, TX, GA
- **21.3%** Hispanic - NM, TX, CA, AZ, NV, FL
- **11%** Poverty (11th lowest) - NH, HI, MD, CT, AK, MN